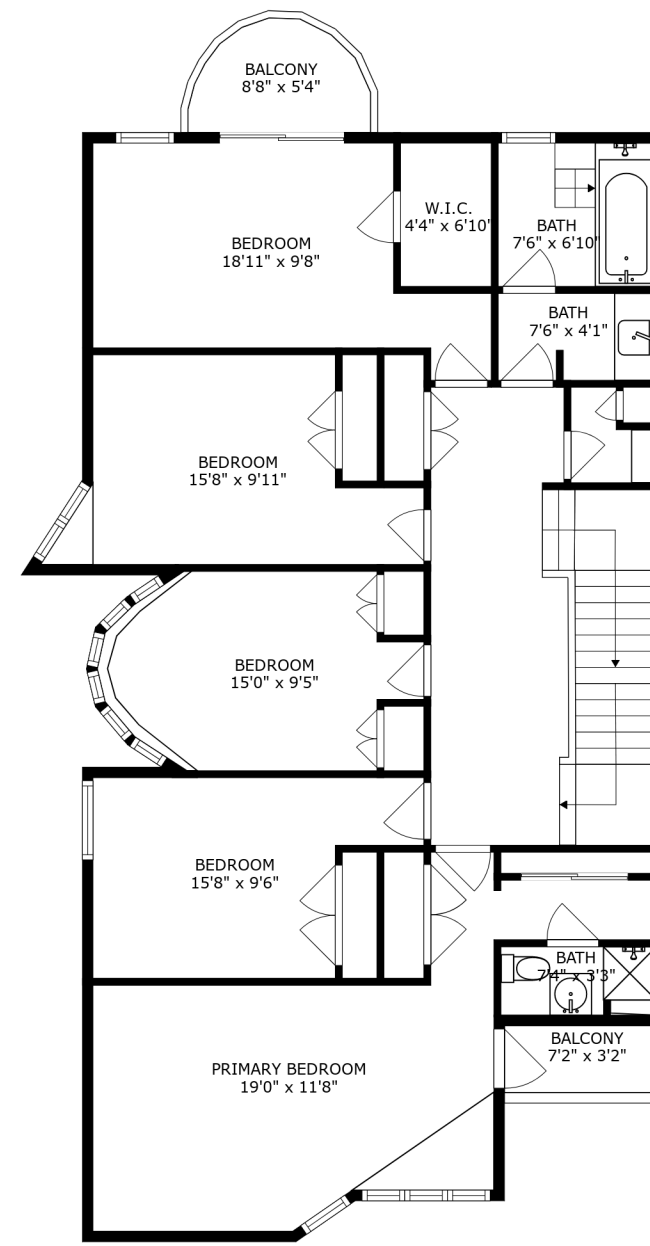
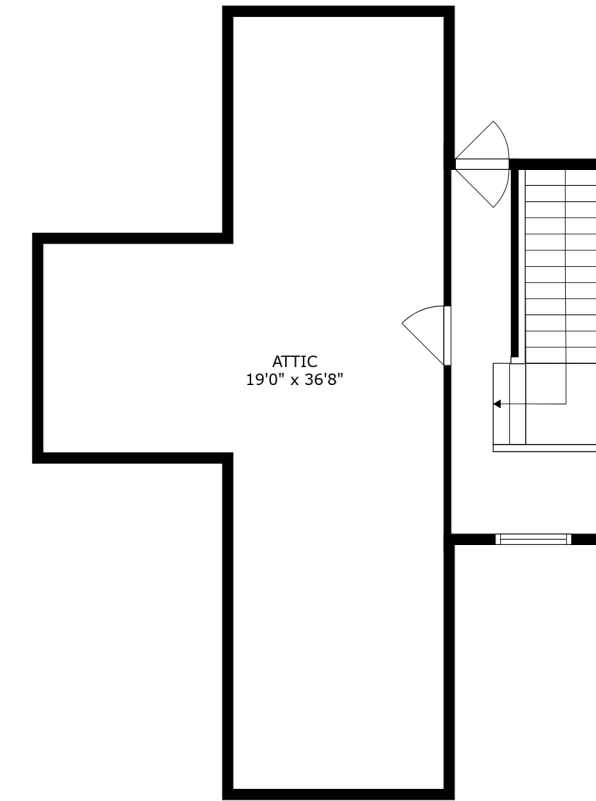


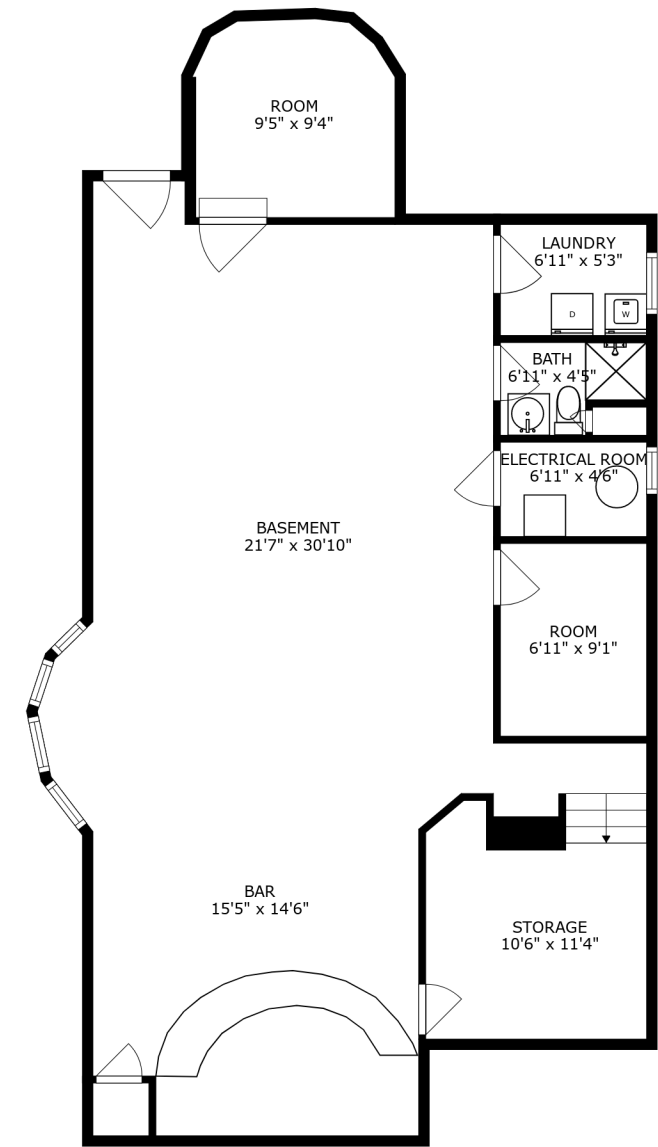
FLOOR 3



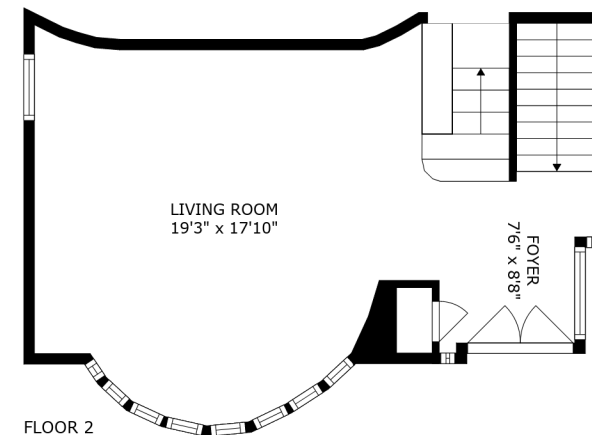
FLOOR 4



FLOOR 5

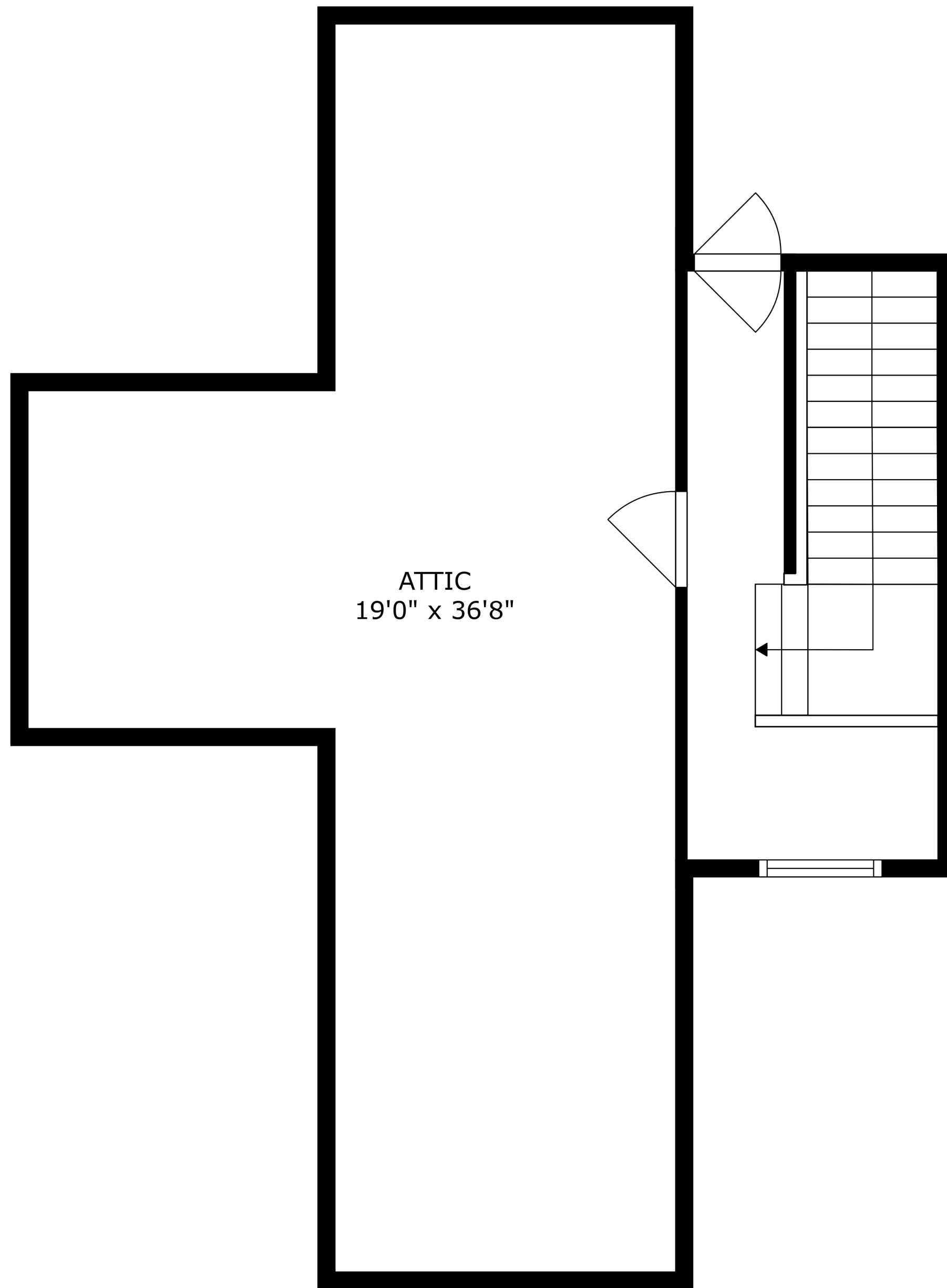


FLOOR 1

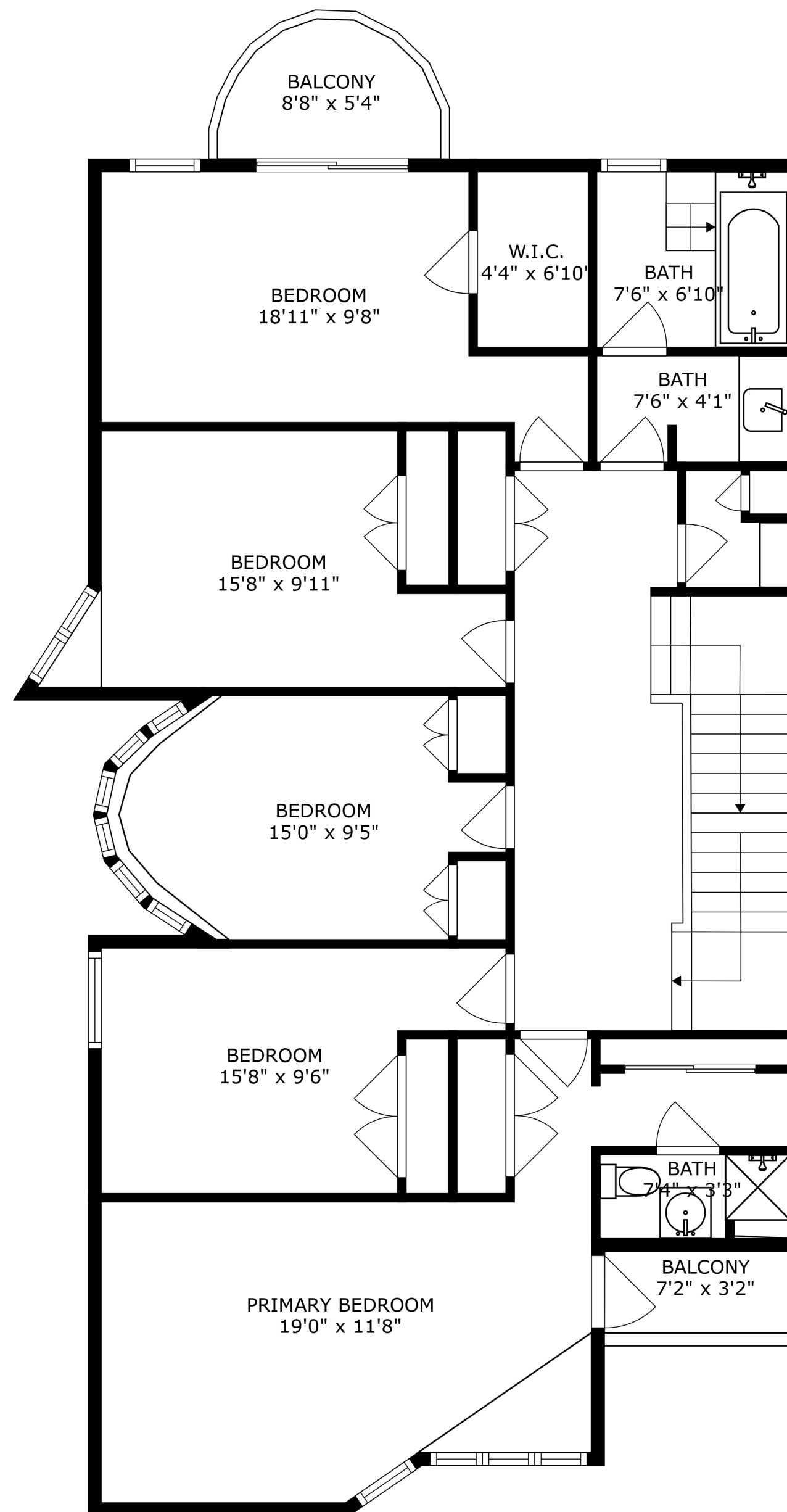


FLOOR 2

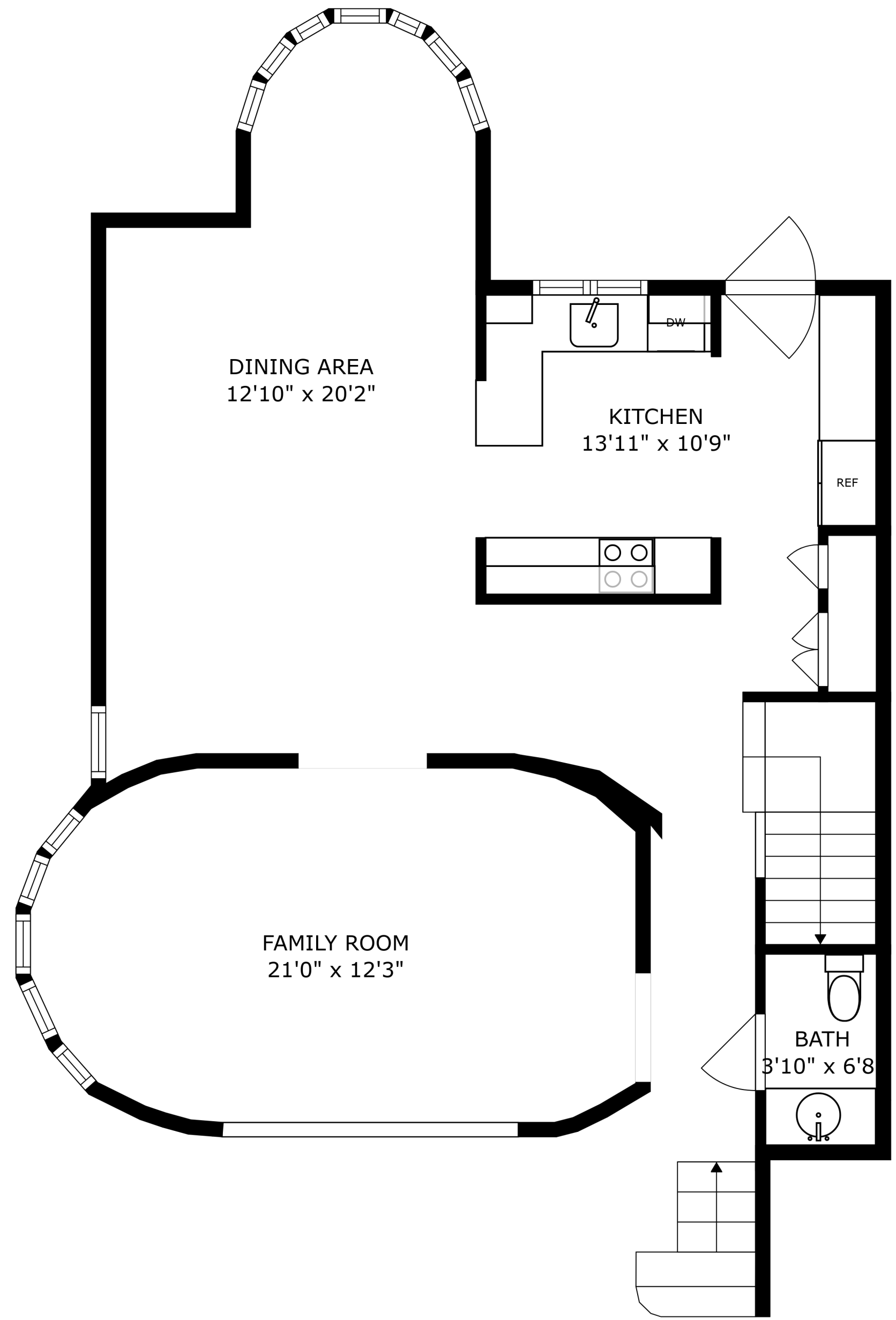
SIZES AND DIMENSIONS ARE APPROXIMATE, ACTUAL MAY VARY.



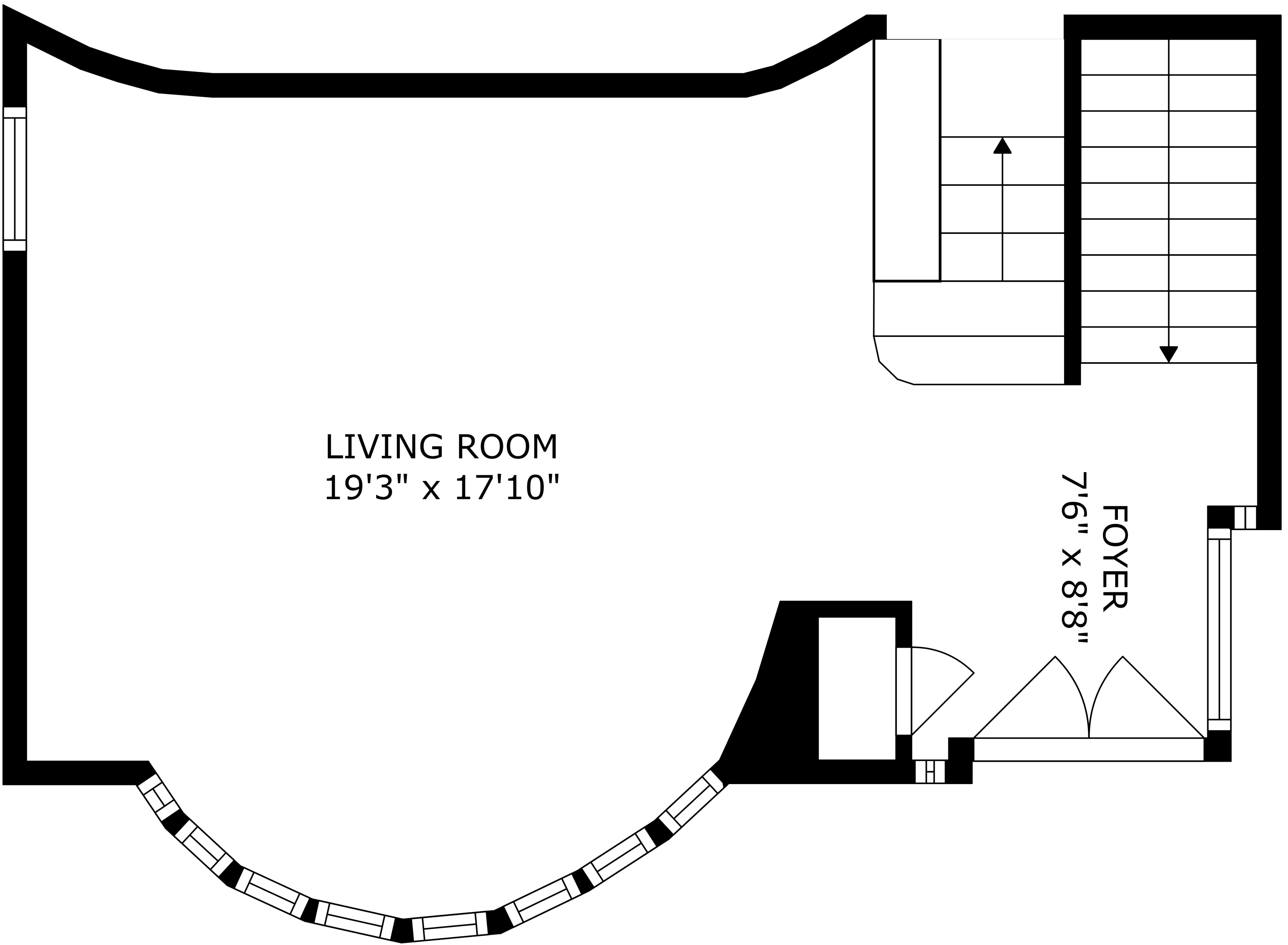
SIZES AND DIMENSIONS ARE APPROXIMATE, ACTUAL MAY VARY.



SIZES AND DIMENSIONS ARE APPROXIMATE, ACTUAL MAY VARY.

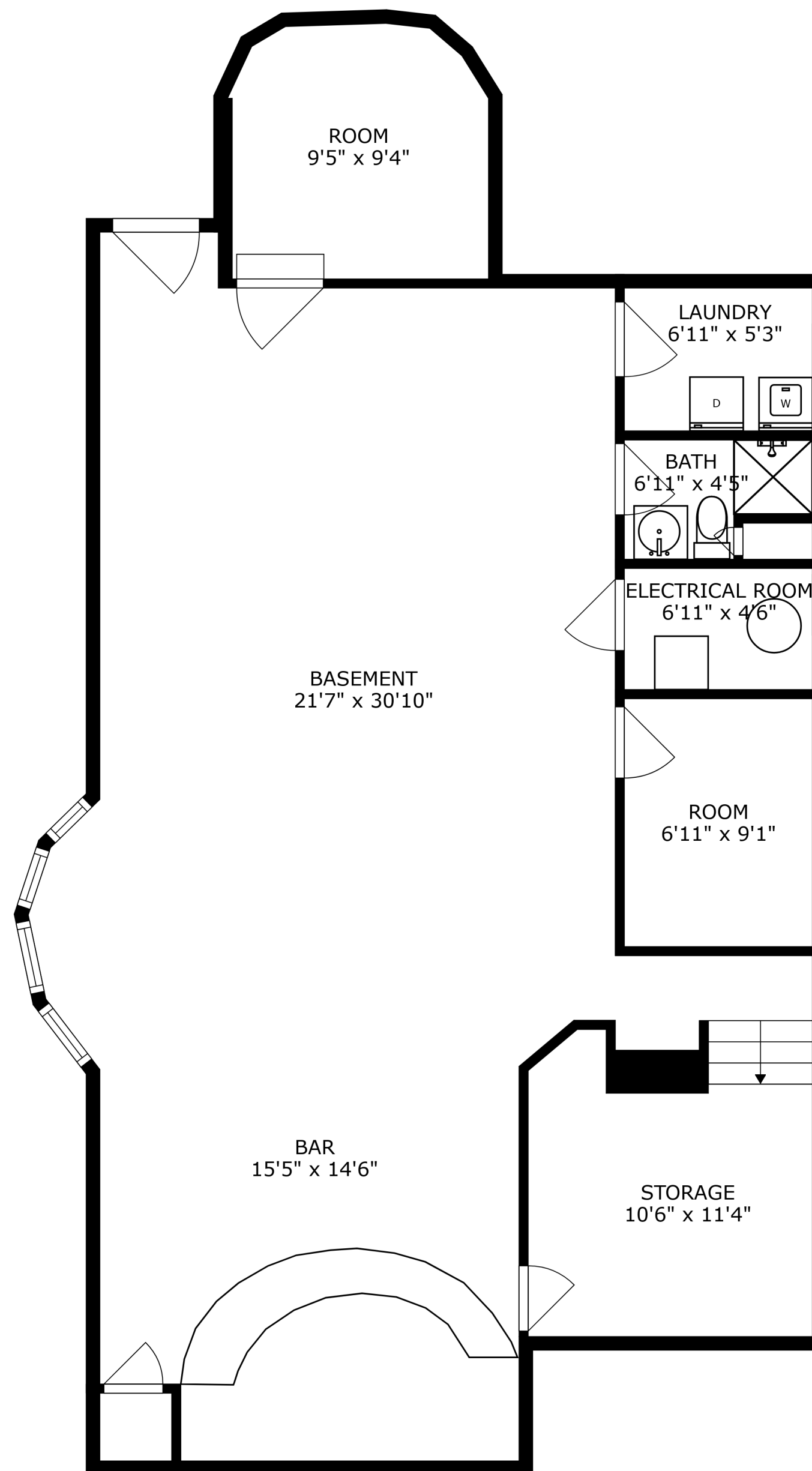


SIZES AND DIMENSIONS ARE APPROXIMATE, ACTUAL MAY VARY.



LIVING ROOM
19'3" x 17'10"

FOYER
7'6" x 8'8"



SIZES AND DIMENSIONS ARE APPROXIMATE, ACTUAL MAY VARY.